

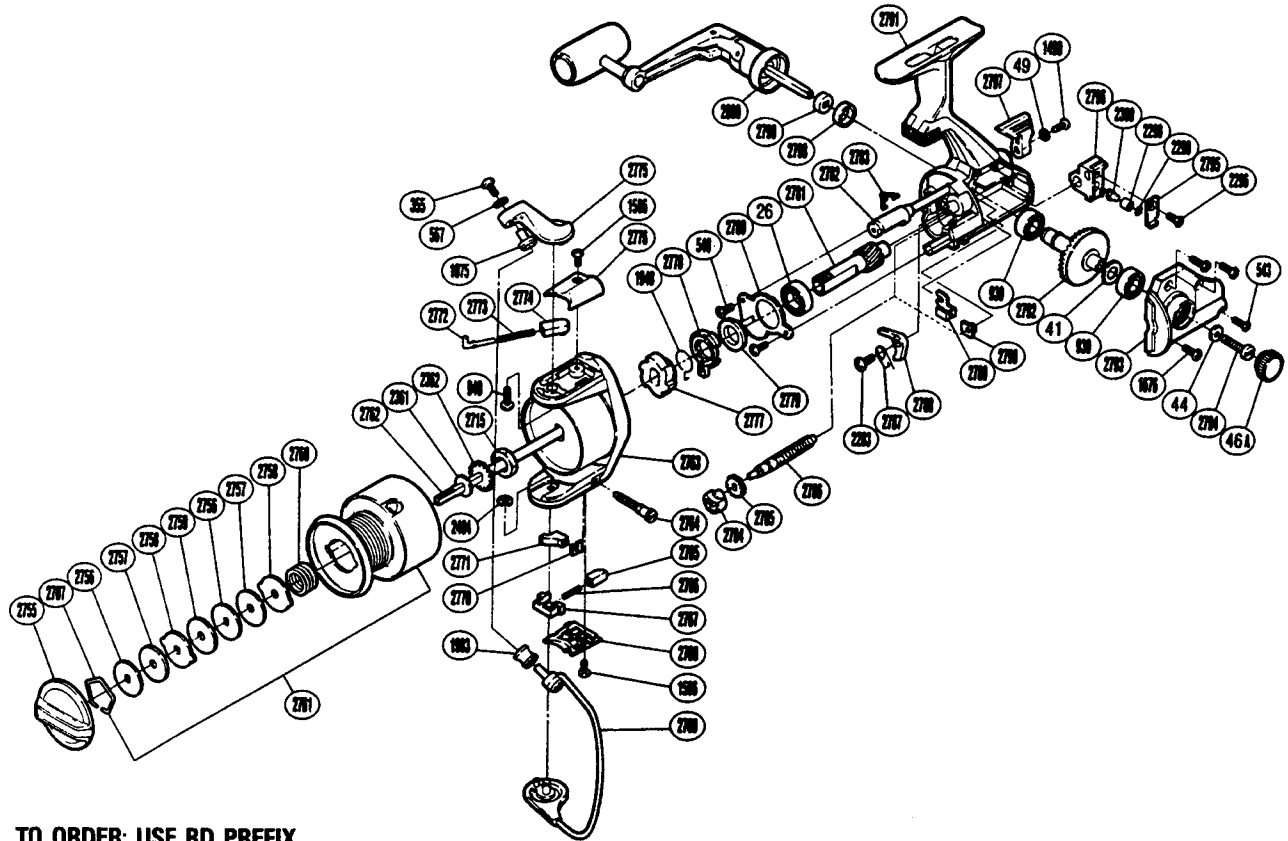
EXPLODED PARTS VIEW

**TITANIDE
BIOMASTER
GT2000** 

SHIMANO

1990 REPAIR MANUAL

Shimano American Corporation, One Shimano Dr.
Irvine, CA 92718



**TO ORDER: USE RD PREFIX
WITH PART NUMBER**

PARTS LIST

RD #	DESCRIPTION	RD #	DESCRIPTION	RD #	DESCRIPTION
0026	Ball Bearing	2707	Drag Washers Retainer	2777	Anti-Reverse Ratchet
0041	Drive Gear Washer	2715	Rotor Nut	2778	Anti-Reverse Lock Out
0044	Handle (Screw) Lock Washer	2755	Drag Knob	2779	Pinion Spacer
0046A	Handle Screw Cap	2756	Key Washer	2780	Bearing Retainer
0049	Lock Washer	2757	Drag Washer 1	2781	Pinion Gear
0355	Line Roller Screw (Nylock)	2758	Eared Washer	2782	Anti-Reverse Cam
0540	Anti-Reverse Pawl Screw	2759	Drag Washer 2	2783	Anti-Reverse Cam Spring
0543	Side Cover Screw (B)	2760	Drag Coil Spring	2784	Worm Bearing (Front)
0567	Lock Washer	2761	Spool Assembly	2785	Idle Gear
0930	Ball Bearing	2762	Main Shaft	2786	Worm Shaft
0940	Bail Trip Cam Screw	2763	Rotor	2787	Anti-Reverse Pawl Spring
1075	Line Roller Washer	2764	Trip Adjustment Screw	2788	Anti-Reverse Pawl
1490	Anti-Reverse Lever Screw	2765	Trip Adjustment Guide	2789	Worm Shaft Retainer
1506	Bail Spring Cover Screw	2766	Trip Adjustment Spring	2790	Worm Bearing (Rear)
1676	Side Cover Screw	2767	Trip Adjustment Slider	2791	Body
1948	Anti-Reverse Lock Out Spring	2768	Bail Trip Cover	2792	Drive Gear
1983	Sic Ceramic Roller	2769	Bail Assembly	2793	Side Cover
2283	Anti-Reverse Pawl Screw	2770	Adjustment Screw Retainer	2794	Handle Lock Screw
2296	Slider Retainer Screw	2771	Trip Adjustment Cam	2795	Oscillating Pawl Cover
2298	Spacer	2772	Bail Spring Guide (A)	2796	Oscillating Slider
2299	Oscillating Slider Bushing	2773	Bail Spring	2797	Anti-Reverse Lever
2300	Oscillating Pawl	2774	Bail Spring Guide (B)	2798	Handle Lock Ring
2361	Spool Washer	2775	Bail Arm	2799	Handle Lock Spacer
2362	Spool Support	2776	Bail Spring Cover	2800	Handle Assembly
2404	Idle Gear Retainer				

Prices and specifications subject to change without notice.